

Survey of Crematoria in the British Islands 2025

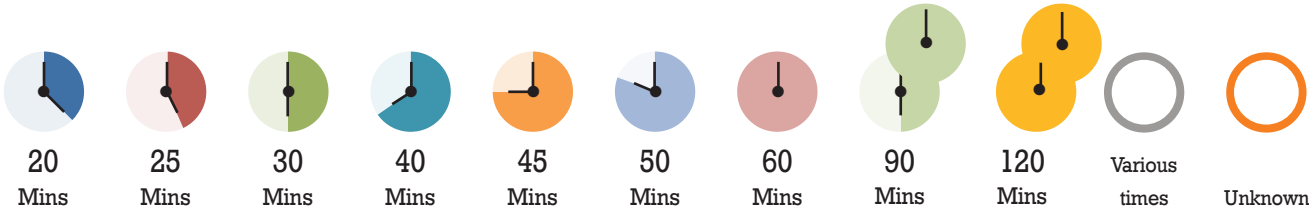
Each year, The Cremation Society carries out a survey of all crematoria in the British Islands, to track the latest information on up-to-date services and facilities offered. This enables us to follow any trends across crematoria and highlight any new practices emerging. Thank you once again to all those crematoria who returned their data to us.

The following information is based on the data provided by 329 (out of 334) crematoria surveyed. From the 329 crematoria that responded, where no information was provided or the crematoria were unable to answer the question, this is shown as 'unknown'. Where an earlier

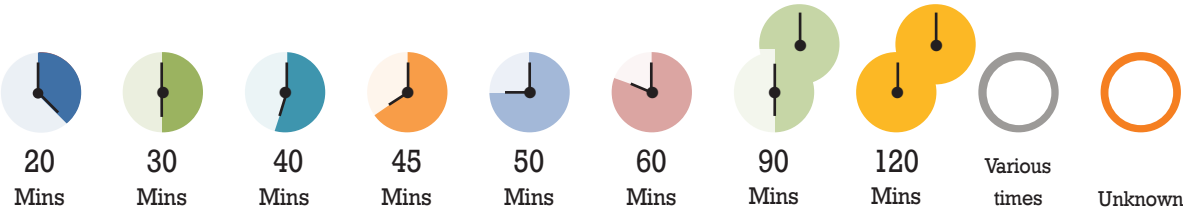
comparative figure is provided, this is based either on the earliest data published in *Pharos International* in 2007 or where a subject was not surveyed in 2007, then the earliest date for which information is available.

Crematoria booking slots

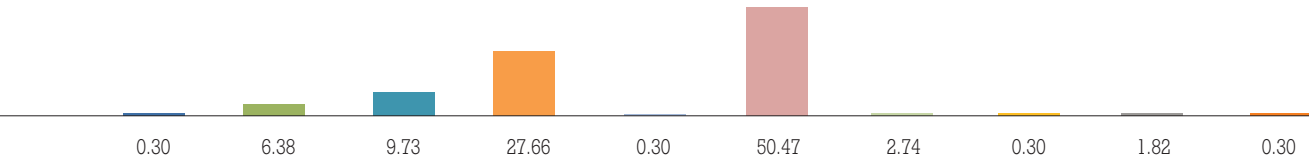
Percentages



2007



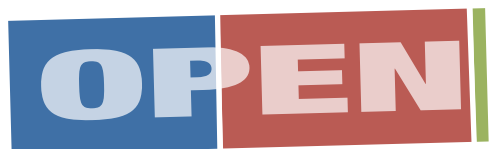
2025



Crematoria allowing external organisations/clubs to use their chapels/facilities

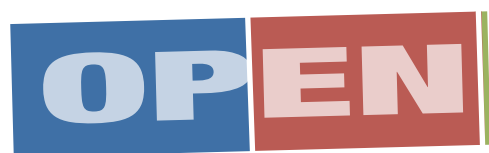
Percentages

2023



42.35 54.78 2.87

2025



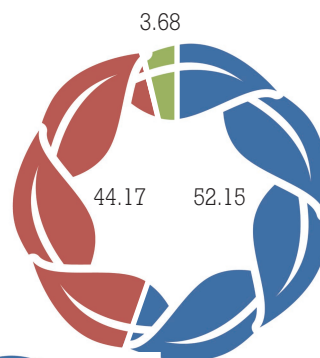
49.24 49.85 0.91

■ Yes ■ No ■ Unknown

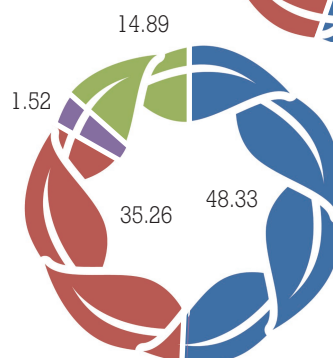
Crematoria with a formal environmental impact policy

Percentages

2024



2025



■ Yes ■ No
■ Follows Council Policy ■ Unknown

Crematoria having had to postpone or decline a cremation because of irregularities on Cremation Form 1 or 4

Percentages

2020



14.66 82.08 3.26

2025



9.12 90.27 0.61

■ Yes ■ No ■ Unknown